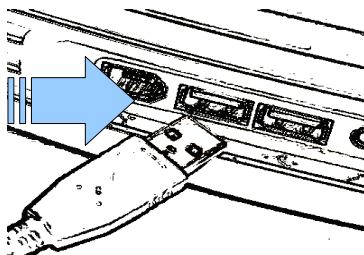


How to proceed for CPLD and CPU programming

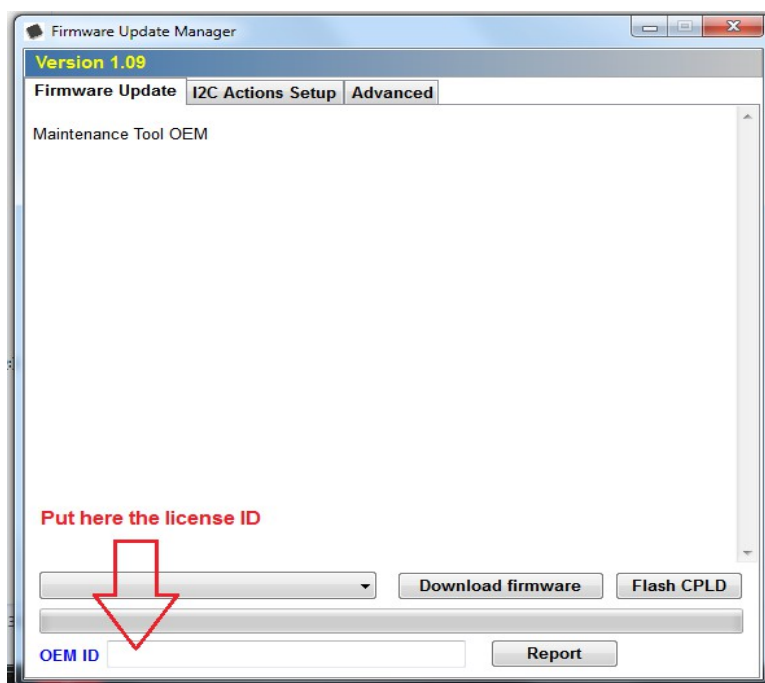
First download and unzip in a folder the OEM tool package “OEMTool109a.zip”

Then **plug the USB cable**



if windows requires a driver please choose the inf file **atm6124_cdc.inf** contained in the OEM tool package.

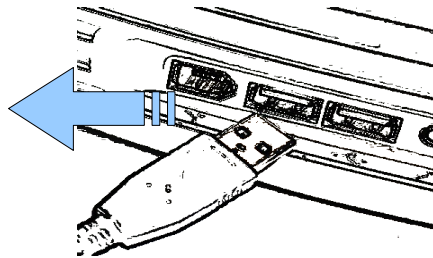
Now run **ConfigOEM109a.exe**



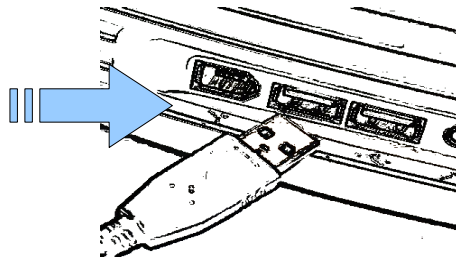
In the OEM ID field indicated with the red arrow put the License ID received when you have bought the license option.

Now you are able to program the CPLD step by step

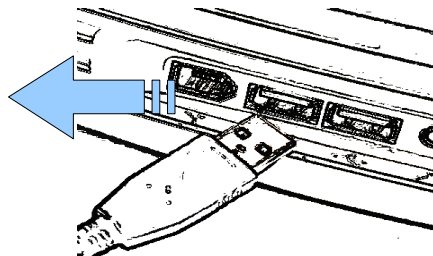
- 1) Press the button **Flash CPLD**
- 2) When **DONE UNPLUG** the USB Cable



Then RE-PLUG USB Cable



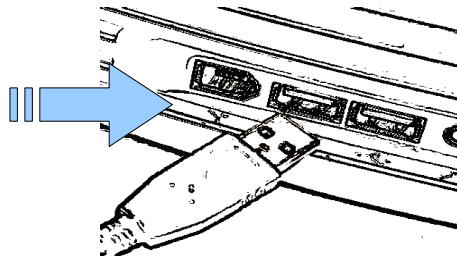
WAIT 3 seconds then unplug it



CPLD PROGRAMMED

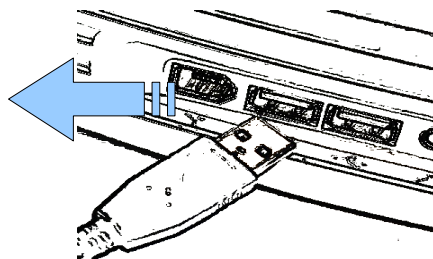
CPU PROGRAMMING

1) Plug the USB CABLE



Press the Button FLASH CPU

When DONE unplug the USB Cable



CPU PROGRAMMED

Device Ready to be TESTED