

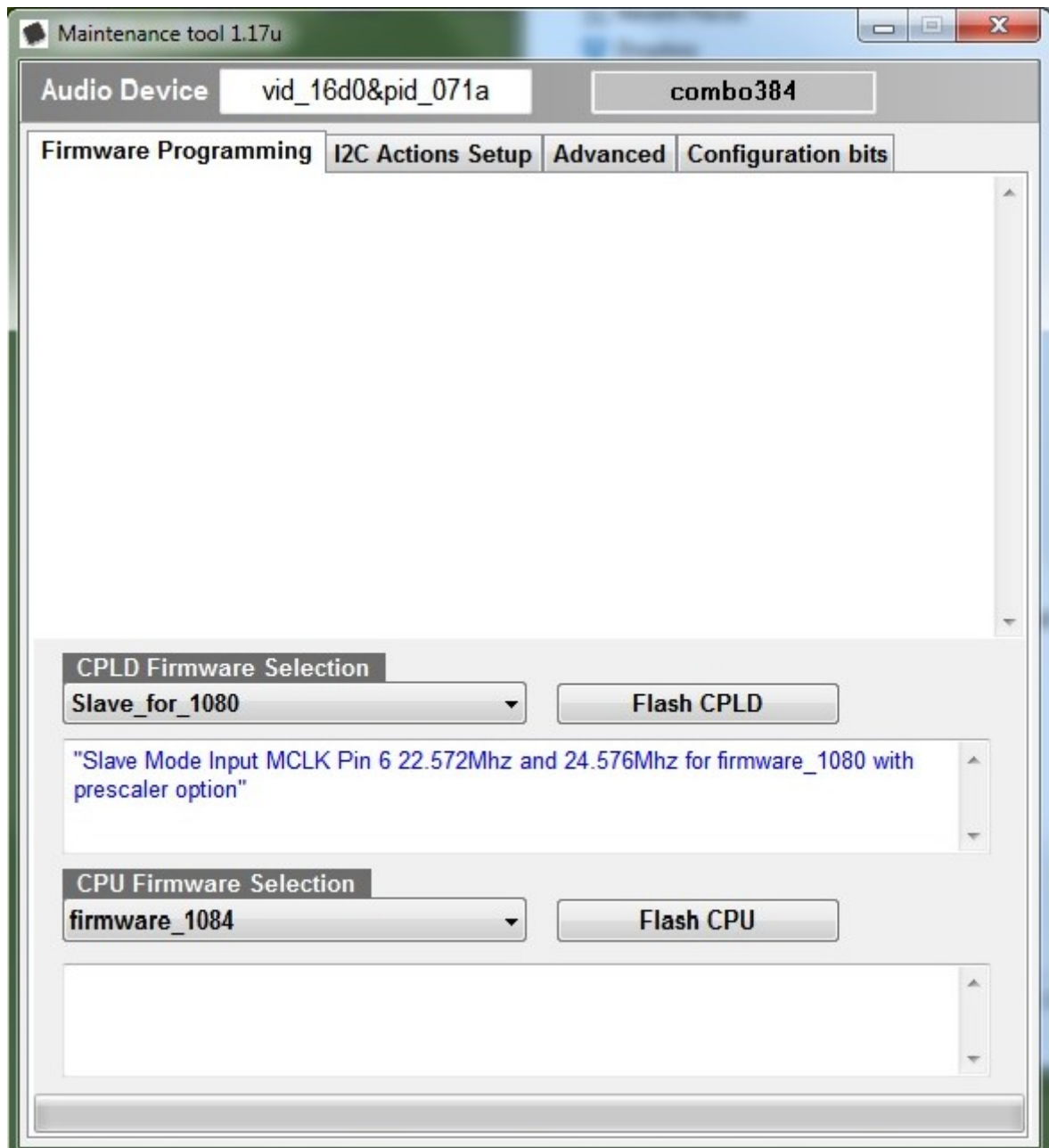
How To Configure the firmware for External Master Clock

Download <http://www.amanero.com/oemtool117.zip>

Unpack it and run ConfigTool.exe

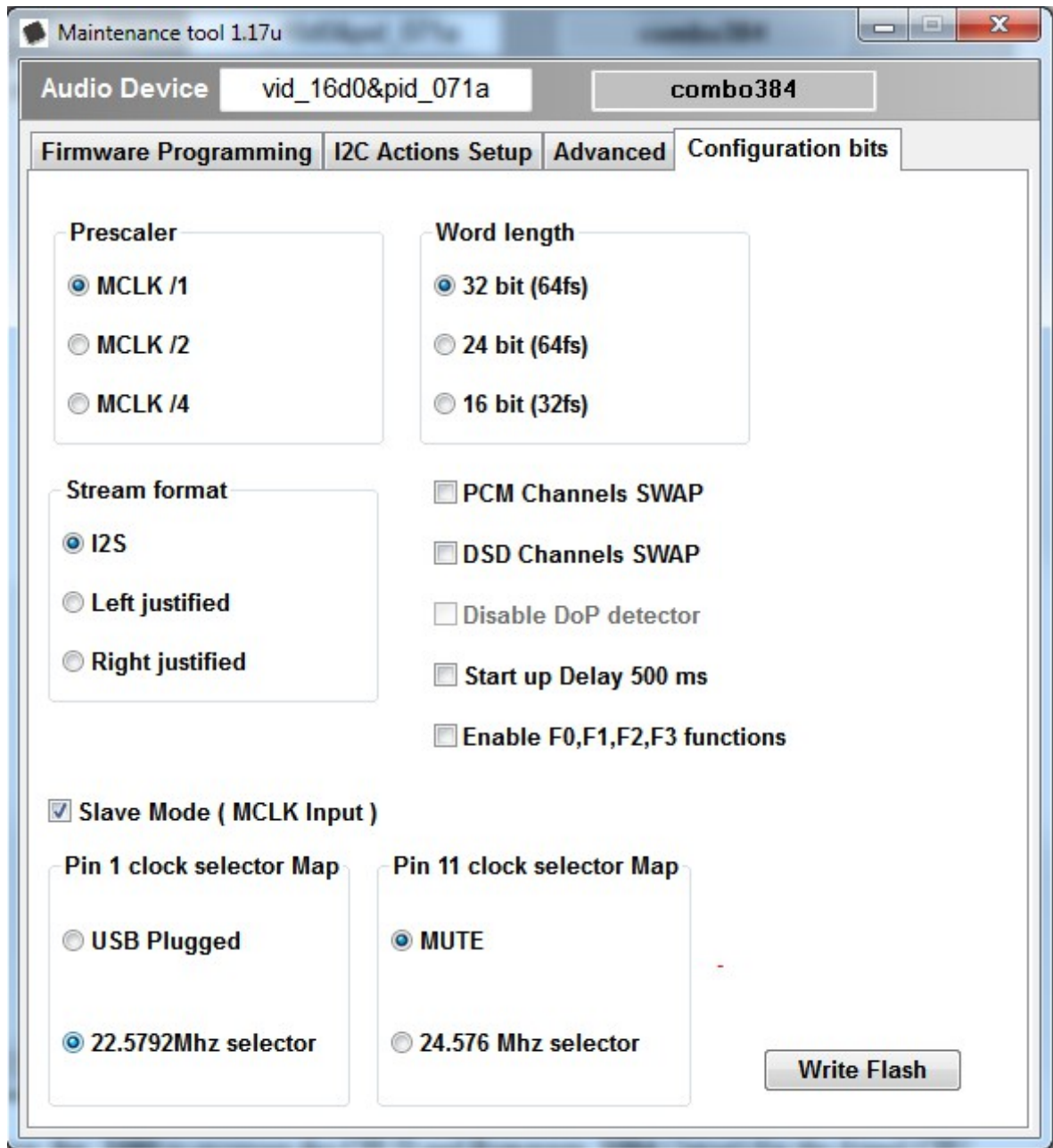
Windows can ask about a .inf file when you plug the erased device to program.

The .inf is on the zip file.



Select **Slave_for_1080** to program the CPLD and **firmware_1084** (latest) for the Atmel CPU

When the CPU is programmed you can Flash the configuration to enable PIN 1 or PIN 11 as clock selector



In this case the SLAVE mode is enabled and the PIN 1 is asserted to 1 when 22.5792Mhz is in use.

The Prescaler can be selected too when other oscillators are in use.

The Press Write Flash and a red message indicating the FLASH UPDATE must be shown.

If all OK the PIN 6 on the output connector will be used as MCLK input.